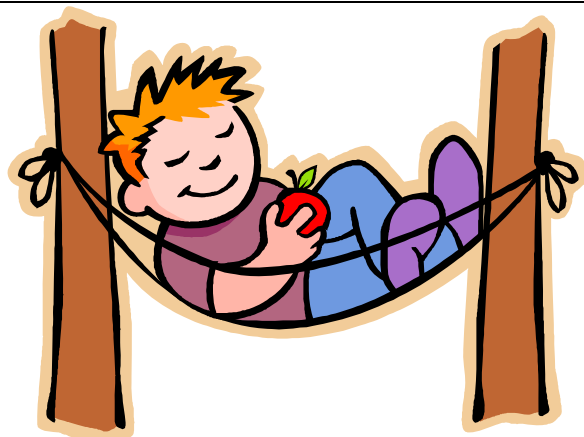


Vowel Contrasts /ɛ:/ vs. /æ/ (la-lie)



la



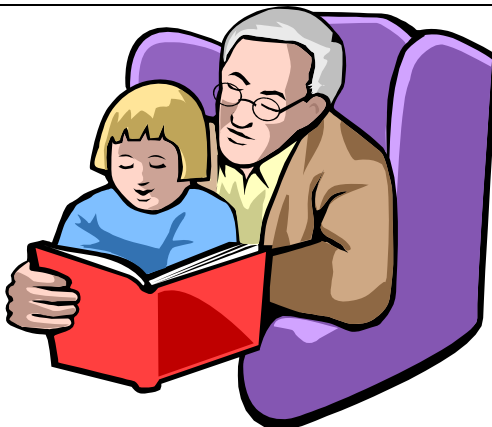
lie



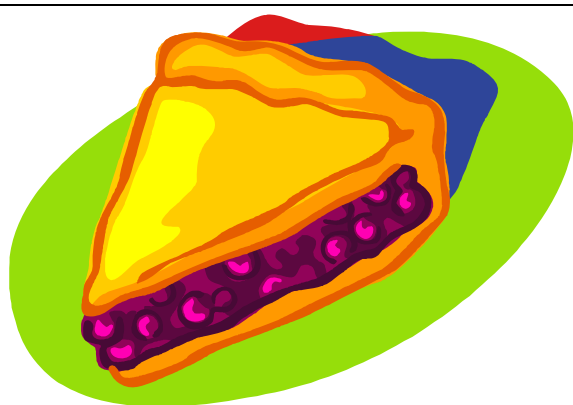
baa



buy



Pa



pie

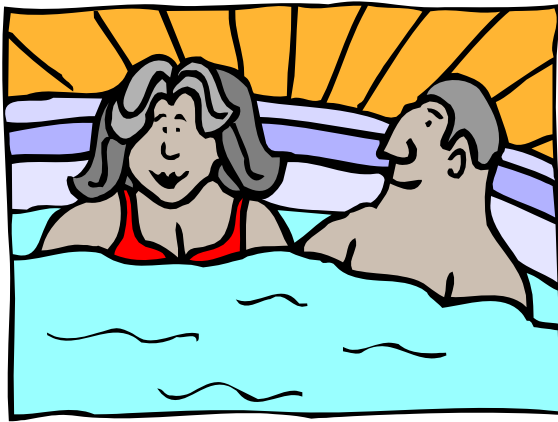
Vowel Contrasts /ɛ:/ vs. /æ/ (la-lie)



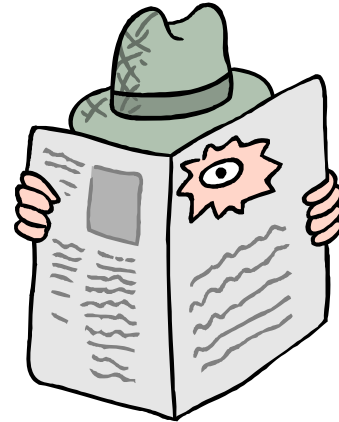
baa



bye



spa



spy



Shah



shy

la lie; baa buy; Pa pie; baa by; spa spy; Shah shy