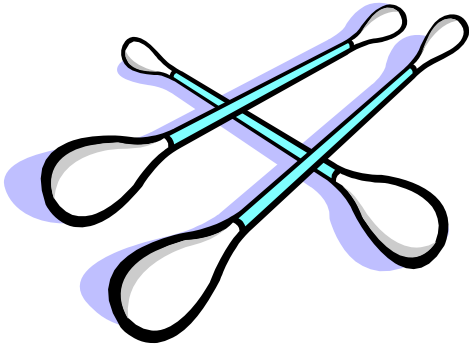


/sw/ SSP



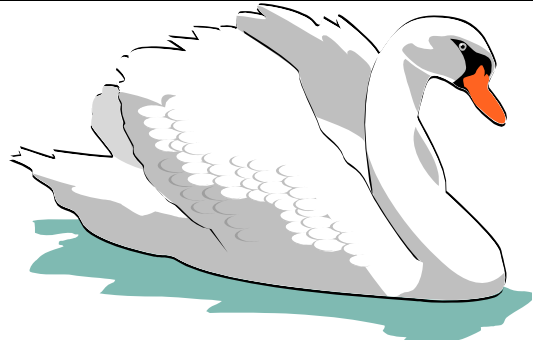
swab



swag



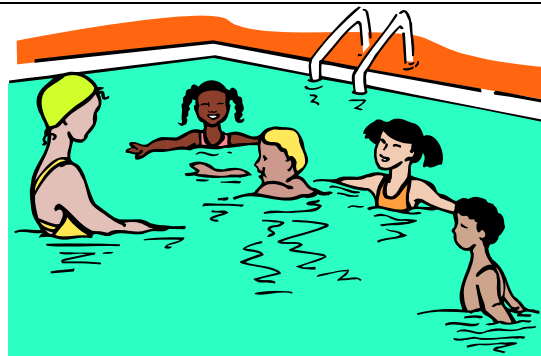
switch



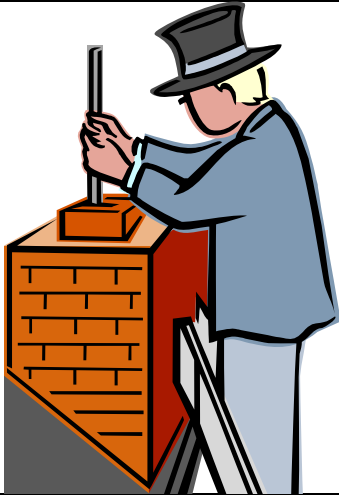
swan



swap



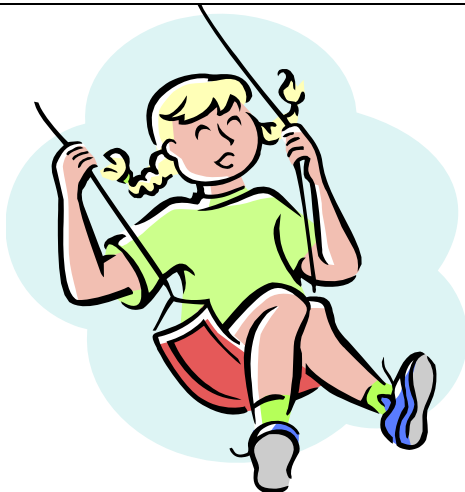
swim



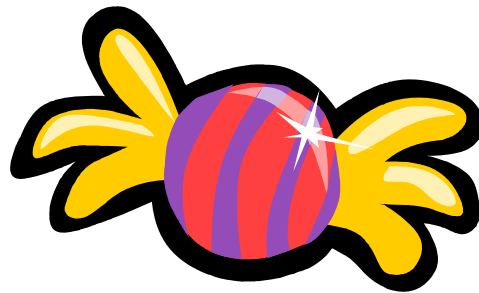
sweep



sweat



swing



sweet

swab swag switch swan swap  
swim sweep sweat swing sweet

## /sw/ SSP

| Most Complex  |   | Sonority Difference |   |
|---------------|---|---------------------|---|
| ↑             | Voiceless fricative + nasal                         | sm sn               | 2 |
|               | Voiceless fricative + liquid                        | fl fr θr sl         | 3 |
| ↓             | Voiced stop + liquid or voiceless fricative + glide | bl br dr gl gr sw   | 4 |
|               | Voiceless stop + liquid                             | pl pr tr kl kr      | 5 |
|               | Voiceless stop + glide                              | tw kw               | 6 |
| Least Complex |   |                     |   |

Consider targeting 3-element clusters, and 2-element clusters with smaller sonority differences (2 or 3 or 4).

|                |          |                             |          |
|----------------|----------|-----------------------------|----------|
| <b>vowels</b>  | <b>0</b> | <b>voiced fricatives</b>    | <b>4</b> |
| <b>glides</b>  | <b>1</b> | <b>voiceless fricatives</b> | <b>5</b> |
| <b>liquids</b> | <b>2</b> | <b>voiced stops</b>         | <b>6</b> |
| <b>nasals</b>  | <b>3</b> | <b>voiceless stops</b>      | <b>7</b> |