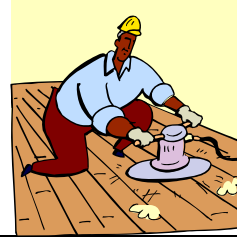




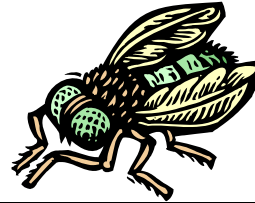
flower



floor



flood



fly



flour



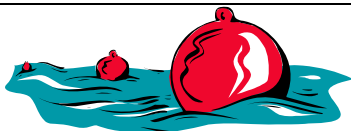
flag



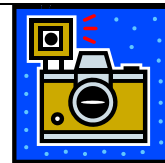
flute



flea



float



flash



flip



flat

flower floor flood fly flour flag flute flea float flash flip flat

## /f/ SSP

Most Complex		Sonority Difference	
↑	Voiceless fricative + nasal	sm sn	2
	Voiceless fricative + liquid	fl fr θr sl	3
↓	Voiced stop + liquid or voiceless fricative + glide	bl br dr gl gr sw	4
	Voiceless stop + liquid	pl pr tr kl kr	5
	Voiceless stop + glide	tw kw	6
Least Complex			

Consider targeting 3-element clusters, and 2-element clusters with smaller sonority differences (2 or 3 or 4).

<b>vowels</b>	<b>0</b>	<b>voiced fricatives</b>	<b>4</b>
<b>glides</b>	<b>1</b>	<b>voiceless fricatives</b>	<b>5</b>
<b>liquids</b>	<b>2</b>	<b>voiced stops</b>	<b>6</b>
<b>nasals</b>	<b>3</b>	<b>voiceless stops</b>	<b>7</b>