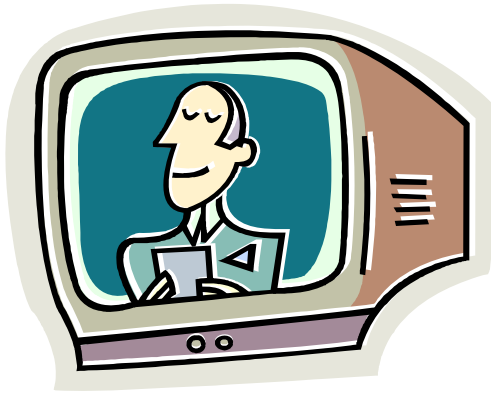


/ʃ/ vs. /sn/



show



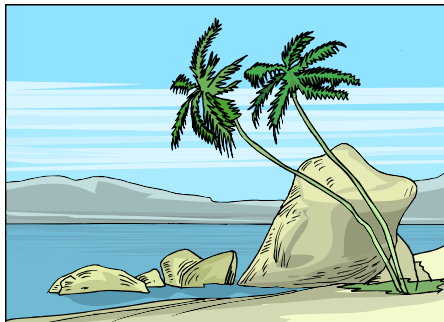
snow



shack



snack

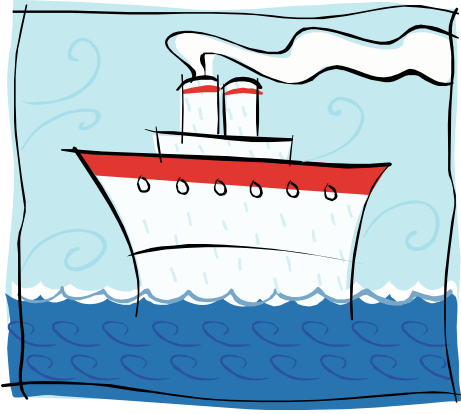


shore

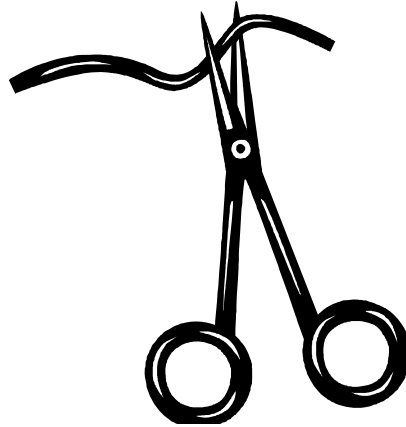


snore

/ʃ/ vs. /sn/



ship



snip



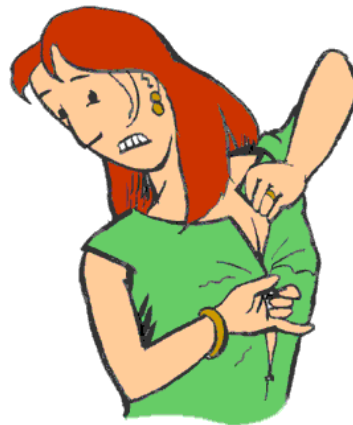
short



snort



shag

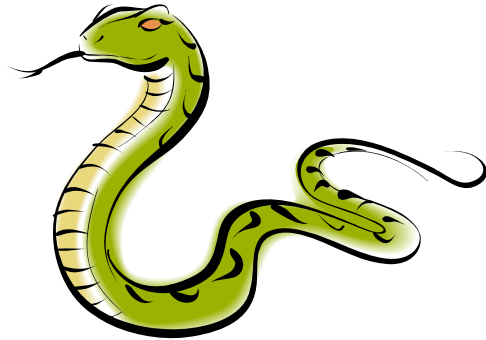


snag

/ʃ/ vs. /sn/



shake



snake



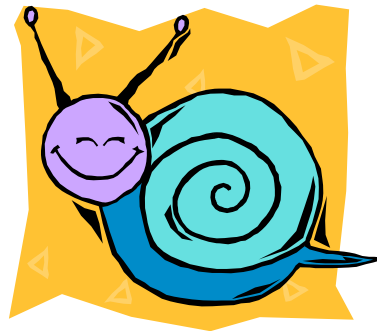
share



snare



shale



snail

*show snow, shack snack, shore snore,  
ship snip, short snort, shag snag,  
shake snake, share snare, shale snail*