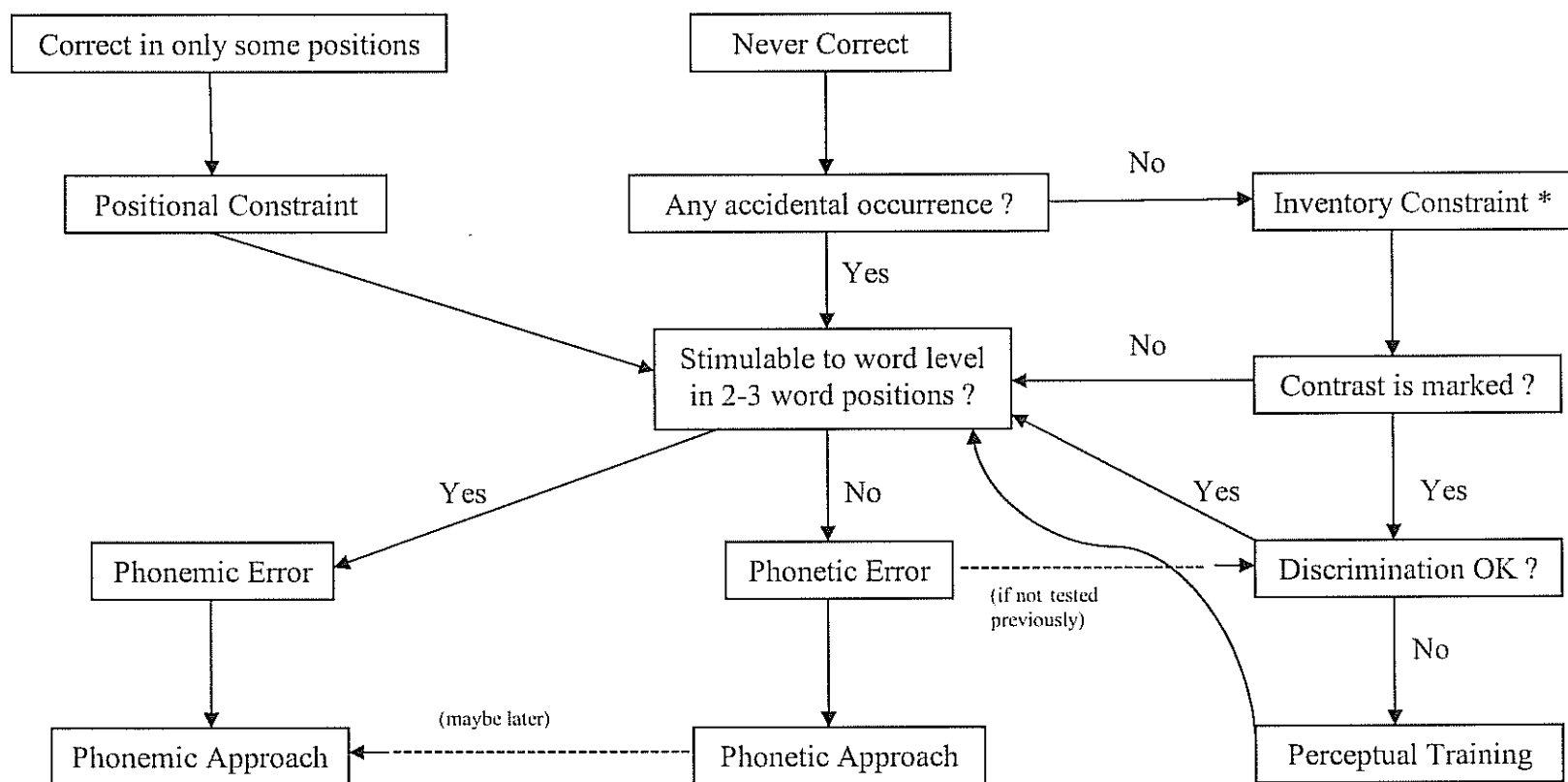


Which Treatment Approach to Use?

Peter Flipsen Jr., Ph.D., CCC-SLP
Idaho State University

July, 2008

The following decision tree can help you decide which treatment approach to use. This process would follow general data gathering (articulation test, conversational speech sampling) and minimal pair probing to look at whether or not contrasts are being maintained.



* if inventory is very limited, consider CAS.